

WMO Global Hydrometry Support Facility (WMO HydroHub)



WORLD
METEOROLOGICAL
ORGANIZATION

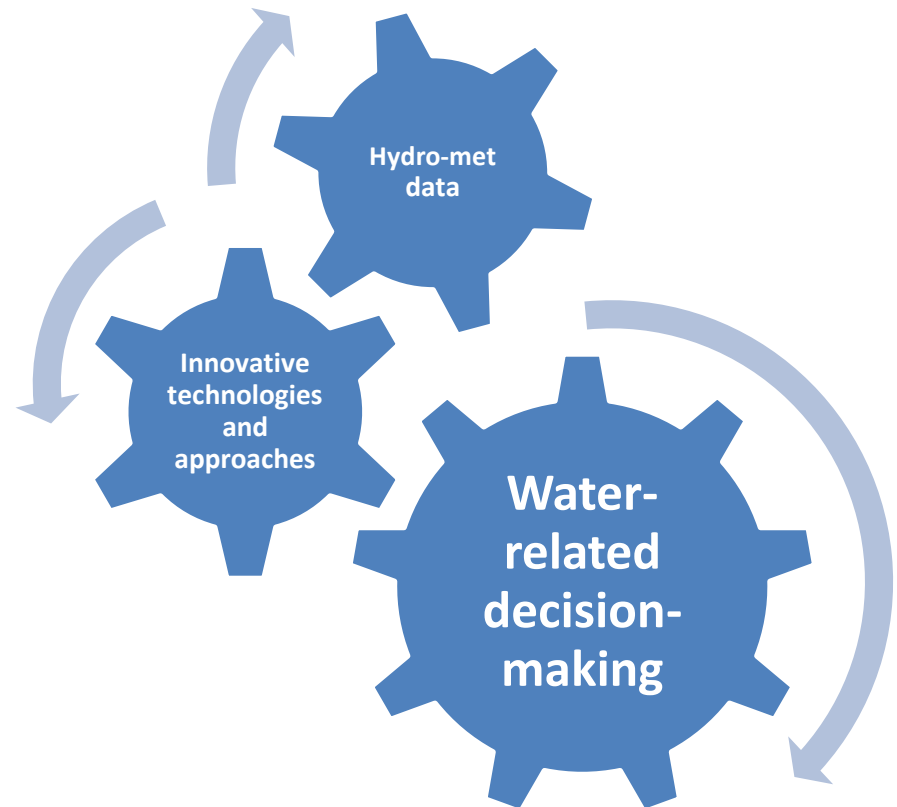


Who we are

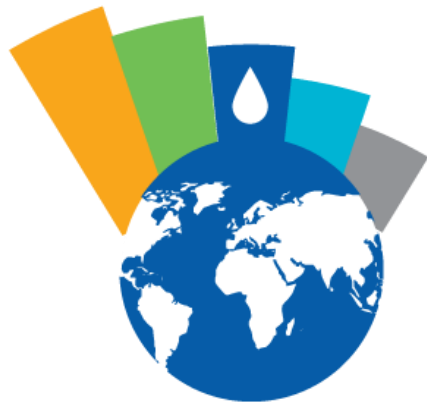


The Global Hydrometry Support Facility (WMO HydroHub)

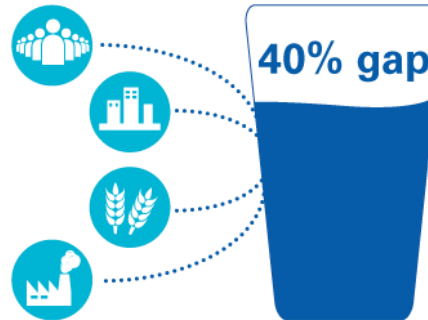
- makes the **portfolio of expertise** among WMO Members – from science to technology to services –
- available to support access to **end-users** of hydrometeorological data and services from various economic sectors
- as **tailored services**.



The Hydrological Monitoring Network Challenge



Water crisis is the **#3 global risk** we face in terms of **impact**



Increasing demand for water may lead to a **40% gap** between **water supply and demand** by 2030



60% of countries report declining numbers of **observing stations**



Reliable data is critical for making **effective and timely decisions**



Our Mission



To help expand a reliable and sustainable base of **hydrometeorological data and information services** in support of informed **decision and policy-making** in water management.



Our Objectives



1. Enhance and sustain **efficient and innovative hydrological monitoring systems** around the world



2. Foster the use of hydrometeorological data for evidence based **policy and decision-making** in support of **Integrated Water Resources Management** and **Disaster Risk Reduction**, especially in transboundary settings



3. Facilitate the **modernization and improvement** of operational hydrology through operational uptake of **innovative hydrometric technologies and services** by National Meteorological and Hydrological Services



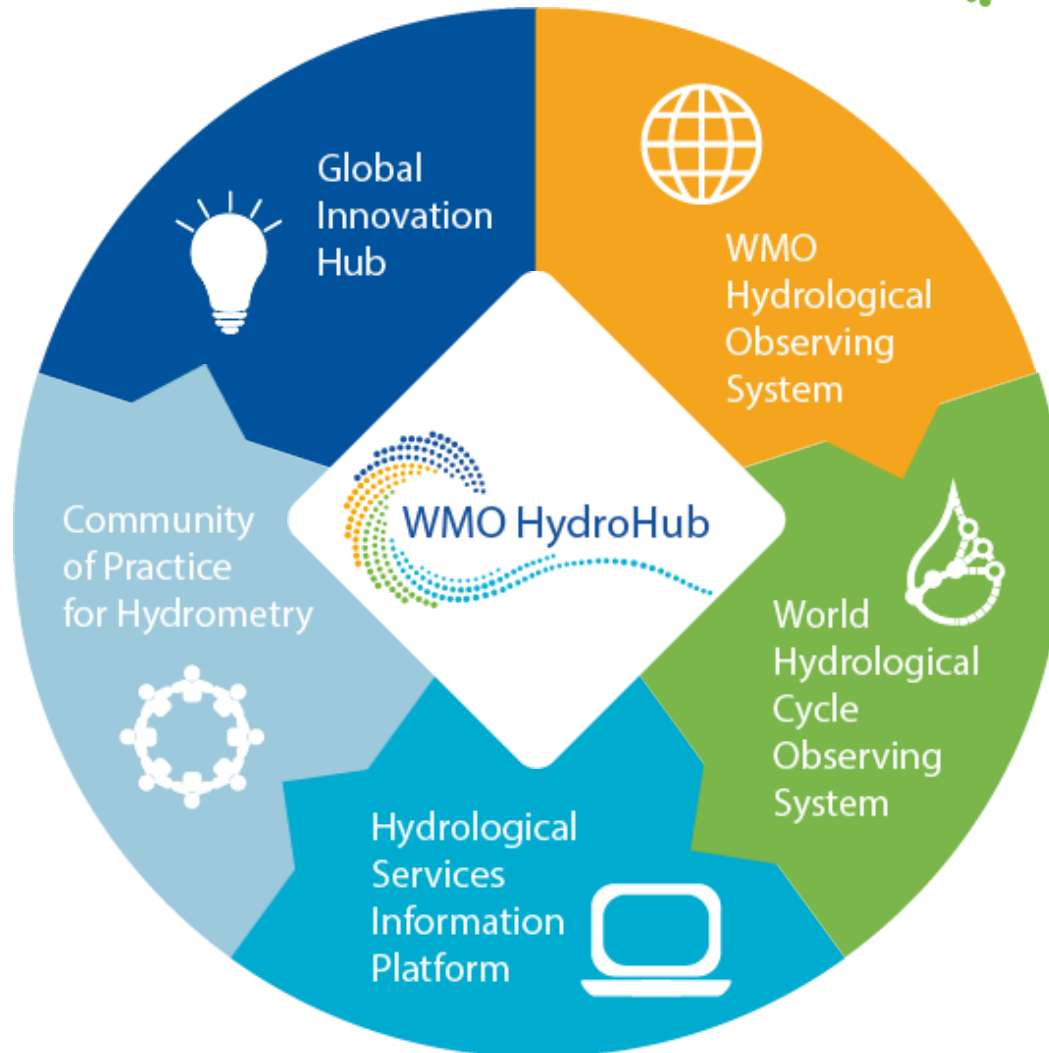
Our Strategic Priority Areas



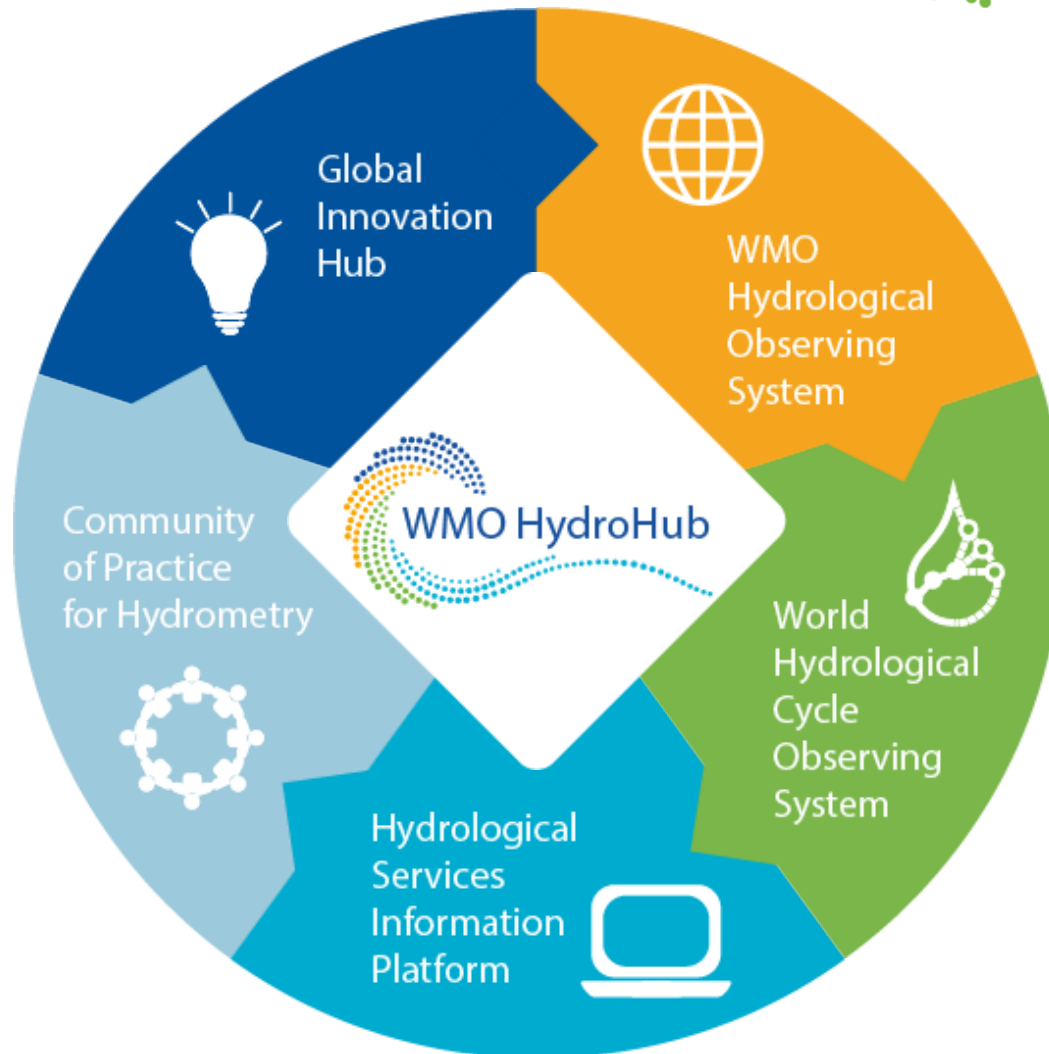
1. Building Hydrological **Monitoring Capacity**
2. Embedding **Innovation** in Hydrometry
3. Enabling Hydrological **Data Sharing**
4. Connecting the **Global Water Monitoring Community**
5. Providing a **Global Focal Point for Hydrometry**



Our Components



Our Components



Global Innovation Hub



Strengthens fit-for-purpose and sustainable monitoring capabilities through **innovation**.



Key innovation areas:

HYDROMETRY: Operational uptake of innovative technologies and emerging monitoring schemes, such as crowd sourcing.

DATA MANAGEMENT: Pragmatic solutions to introduce new technologies and paradigms into the operational routines of National Meteorological and Hydrological Services (NMHSs) and other stakeholders.

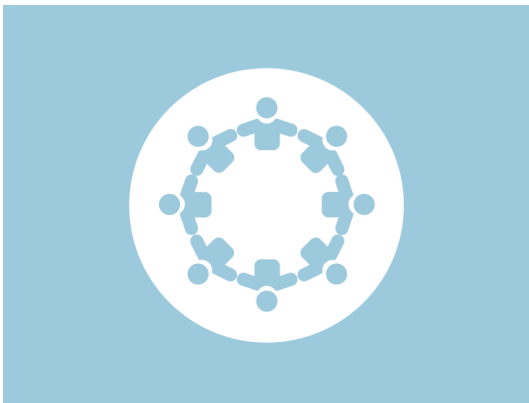
MANAGEMENT PROCESSES: Good management practices, including case studies, guidance material, templates for recurring administrative tasks and other knowledge products.



Community of Practice for Hydrometry



Allows NMHSs and others to **exchange experiences** and provide **mutual support** in relation to their hydrometeorological data collection and management activities.



PARTNERSHIP: Support to experts to identify the right partners for discussion to solve common practical problems and to foster dialogue among practitioners.

EXISTING NETWORKS: Approximately 3000 experts from the WMO working bodies of Technical Commissions and Regional Associations.

PLATFORM: Web-based tools to allow the global hydrometry community to share knowledge and provide technical assistance to each other.



Hydrological Services Information Platform



Provides potential funders of hydrometeorological projects with current information on governmental and non-governmental **water monitoring organizations**, and their capabilities, structure, and network- and data-sharing characteristics.



World Hydrological Cycle Observing System (WHYCOS)



Strengthens the **technical, human and institutional capabilities** of NMHSs in hydrological data collection and information product development and dissemination.



HYCOS: Independent regional projects tailored on the needs expressed by countries, the building blocks of the WHYCOS programme.

GUIDELINES: A common approach to the development, implementation and governance of HYCOS components.

TRAINING MATERIALS: A broad range of presentations, documents and publications about all aspects of hydrological observations.



WMO Hydrological Observing System (WHOS)



A premier online portal to **near real-time and historical data** made freely and openly available by National Hydrological Services around the world.



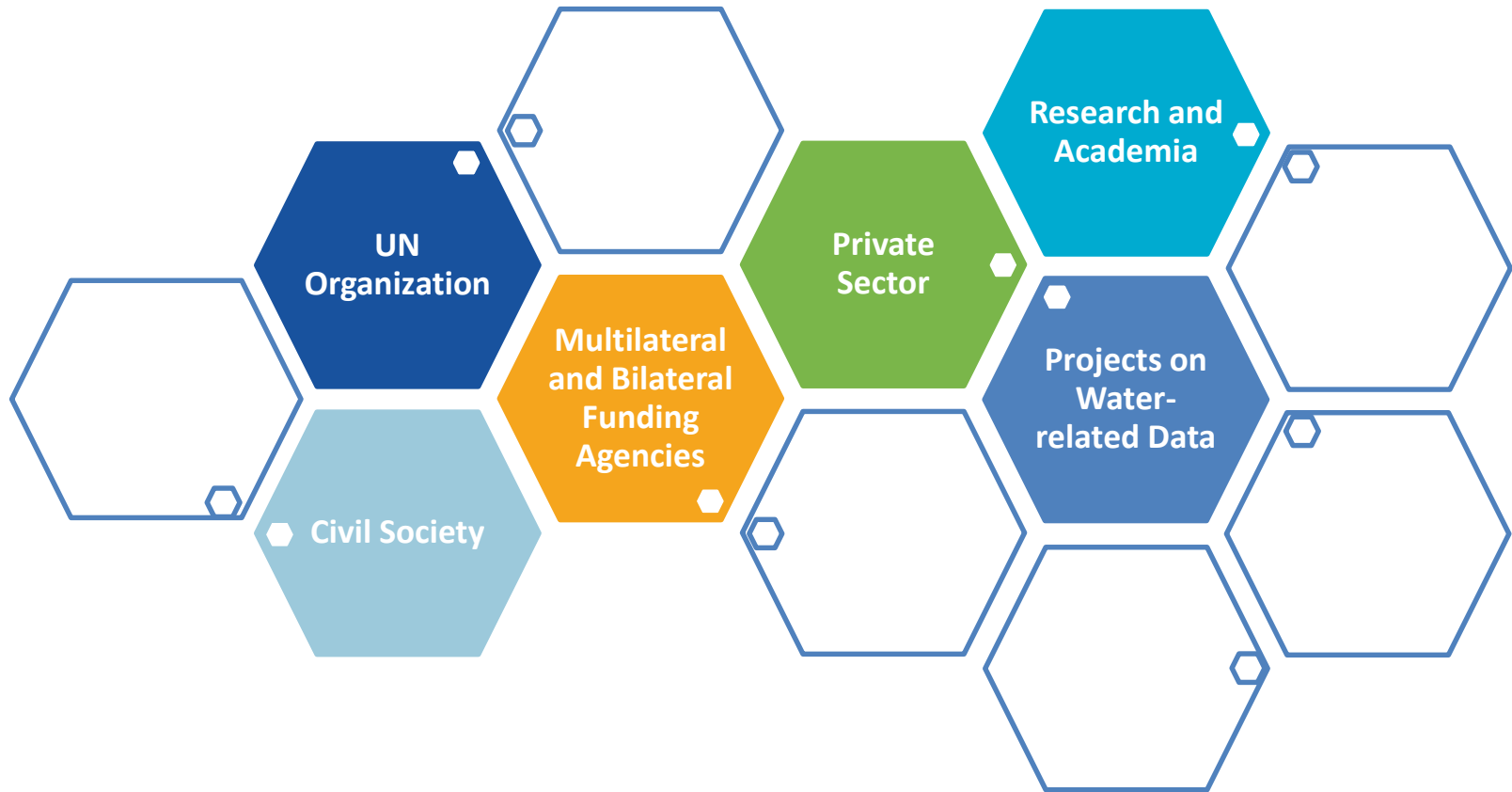
INTERACTIVE MAP: A map interface with links to those NMHSs that make their real-time and historical stage and discharge data available online.

PROTOTYPES: Regional examples currently being developed for Arctic HYCOS and La Plata basin in South America.

WIGOS: A service-oriented framework linking hydrologic data providers and users through an information system enabling data registration, data discovery, and data access.



Our Partners



How can you partner with us



- As a **Financial Partner**

Through the **HydroHub innovation fund**:

- flexible funding source;
- fast and direct intervention;
- identified needs;
- long-term operations and re-usable technology;
- adaptable to various applications and geographies.

- As a **Project Partner**

- projects tailored on the needs of **WMO Members**;
- open dialogue with the WMO community;
- incentives for and commitment of beneficiaries;
- capacities of implementers.



Our Donors



Schweizerische Eidgenossenschaft
Confédération suisse
Confederazione Svizzera
Confederaziun svizra

**Swiss Agency for Development
and Cooperation SDC**

We welcome new funding opportunities. Contact us at: hydrohub@wmo.int



Our Governance



Advisory Council

Members: Currently 9. Term of membership coincides with the intersessional period of CHy.

Chair: President of the WMO Commission for Hydrology (CHy).

Innovation Committee

Members: 13. Term of membership is 2 years.

Chair: An appointed CHy Advisory Working Group member.



Our Contacts



<http://hydrohub.wmo.int>

hydrohub@wmo.int



#wmohydrohub
or #hydrohub



#wmohydrohub



Water Ways



Thank you



WORLD
METEOROLOGICAL
ORGANIZATION